

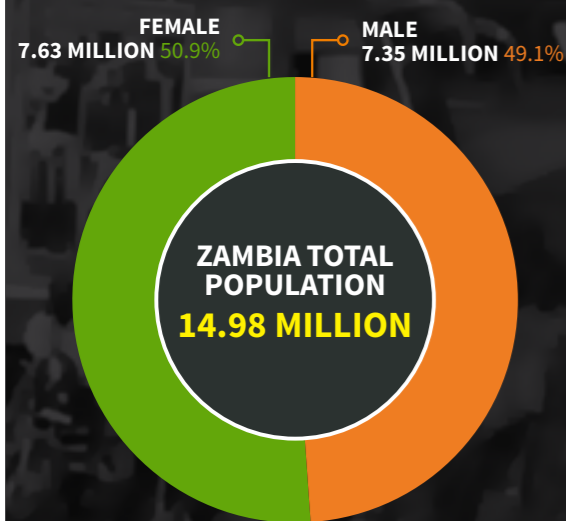
2014 LABOUR FORCE - FACT SHEET

INFOGRAPHIC



SUBSCRIBE NOW: info@pmrczambia.net

TOTAL POPULATION



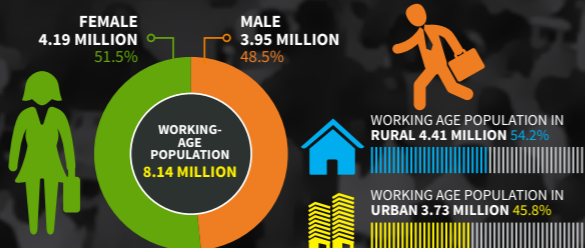
POPULATION IN RURAL
8.74 MILLION (58.4%)



POPULATION IN URBAN
6.23 MILLION (41.6%)



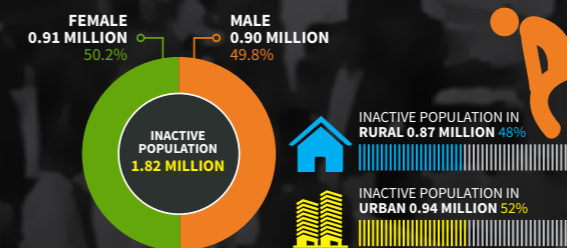
WORKING-AGE POPULATION



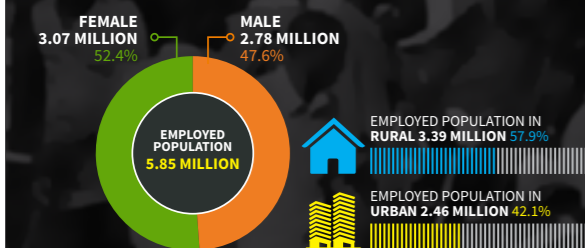
LABOUR FORCE



INACTIVE POPULATION



EMPLOYED POPULATION



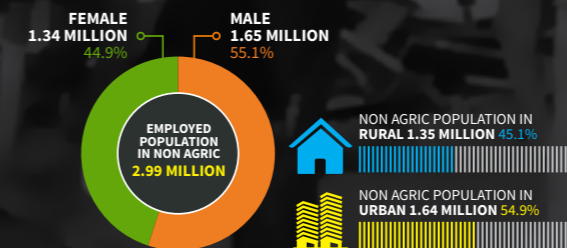
UNEMPLOYED POPULATION



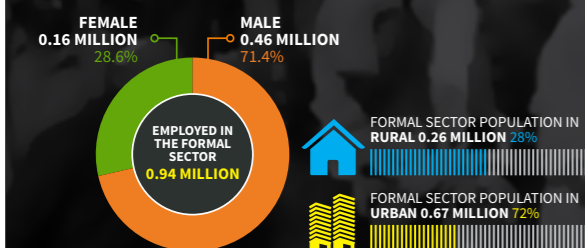
EMPLOYED POPULATION IN AGRICULTURE



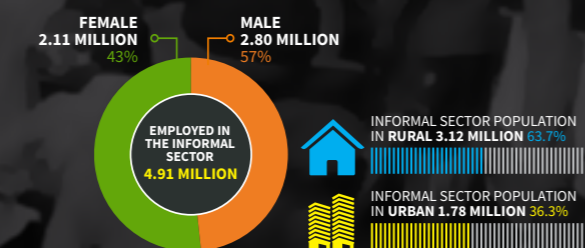
EMPLOYED POPULATION IN NON AGRICULTURE



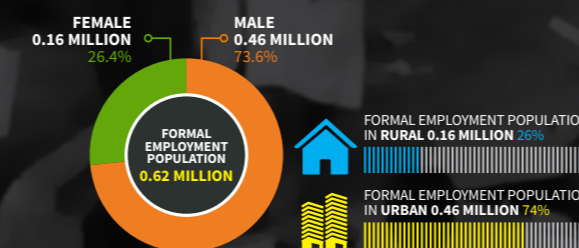
EMPLOYED IN THE FORMAL SECTOR



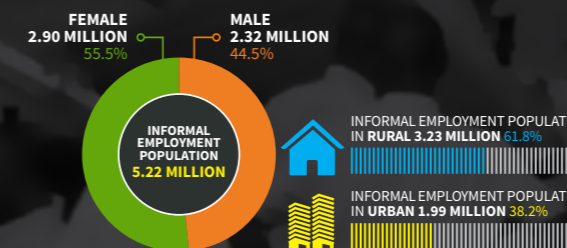
EMPLOYED IN THE INFORMAL SECTOR



FORMAL EMPLOYMENT



INFORMAL EMPLOYMENT

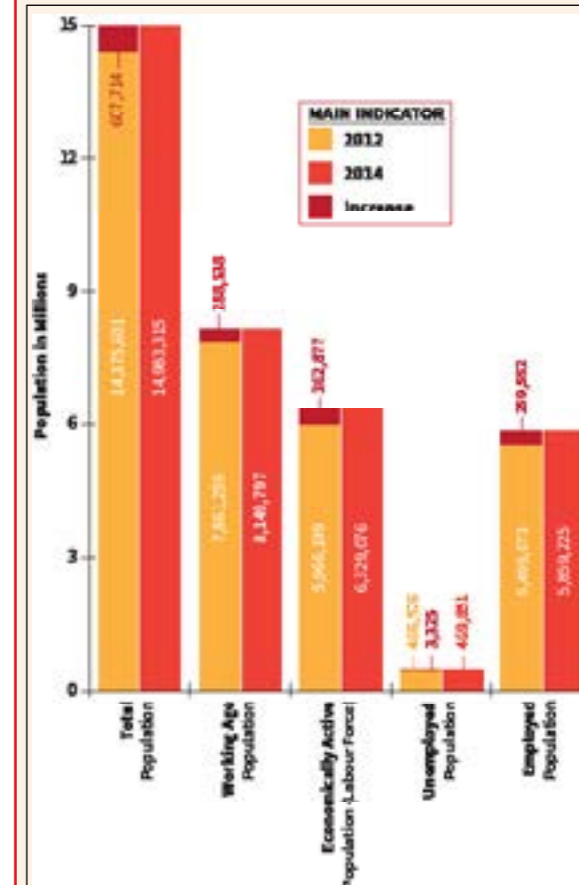


RECOMMENDATIONS

1. Increase Efforts To Formalise The Informal Sector
2. Expedite The Implementation Of National Youth Policy To Further Reduce The Youth Unemployment Rate, Which Stood At 10.5 In 2014.
3. Maintain Stable Macro Economic Fundamentals To Prevent Job Losses.
4. Increase Youth And Women Empowerment Initiatives For Stronger Labour Market For Wealth Creation And Poverty Reduction.

HIGHLIGHTS

Common Labour Force Indicators highlighted 2012-2014



Source: CSO, Labour Force Survey, 2014

The increase in the working age population has been counter faced with job losses estimated at close to

10,000

specifically in the mining sector. These job losses have been attributed to the plummeting copper prices and other economic challenges such as the power deficit.

This is partly evident in the increase in unemployed population. Unemployed population increased from

466,526 IN 2012 TO 469,851 IN 2014